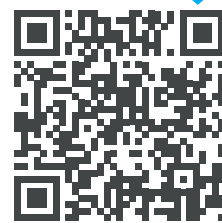


Die-cutting 4.0. With CONNECT|M.



Animation



DIGITIZE YOUR DIE-CUTTING PROCESS... WITH CONNECT|M. THE FUTURE STARTS NOW.

We can only demonstrably improve what we can measure. Start capturing performance data from your packaging production – simply at the touch of a button with CONNECT|M.

CONNECT|M connects the die-cutting machine and tool via the cloud and provides valid metrics for process optimization. The two modules, Tool Management and Performance Tracking, ensure that you always have an overview of your performance and can react quickly and efficiently to deviations when necessary.

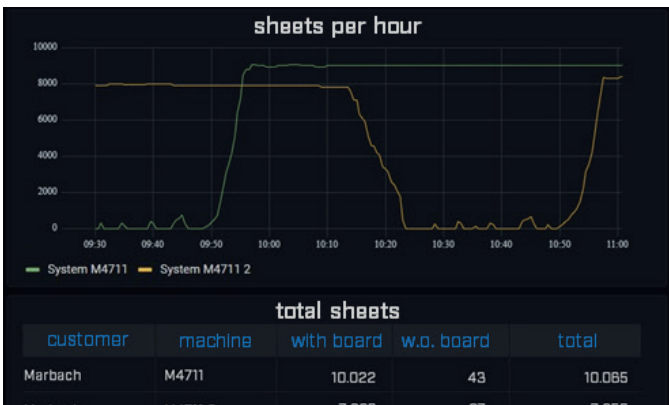


PERFORMANCE TRACKING.

CONNECT|M's performance tracking option captures key metrics at the touch of a button, allows you to compare tools, machines, and locations, and automatically flags performance deviations. Based on this, you can identify trends and opportunities, optimize setup processes, and achieve sustainable improvements in your packaging production performance.

YOUR BENEFITS:

- / Real-time data.
- / Detailed analyses.
- / Early detection.



TOOL MANAGEMENT.

The CONNECT|M Tool Management system ensures transparent and efficient tool provision by making all relevant information available at all times and providing optimal support for maintenance and reordering.

YOUR BENEFITS:

- / An overview of your own inventory of cutting-dies.
- / Efficient processes.
- / Improved tool availability.



LEARN MORE.

Learn more about CONNECT|M on our Experience Hub – simply scan the QR code to get your free whitepaper.

Explore the modules and discover how you can make your processes more transparent and optimize them for the long term.

PACKAGING. PERFORMANCE. YOU.

Contact | Janine Gerich | phone +49 7131 918-497 | janine.gerich@marbach.com

Marbach Group | Karl-Marbach-Straße 1 | 74080 Heilbronn | Germany | www.marbach.com