

Special tools.

Cutting elements. Cutting plates. And bent steel rules.

THE EFFICIENT ONE.

The knife is of great importance for perfect cutting results. Marbach uses different cutting techniques depending on the requirements. Whether bent steel rule parts, cutting plates or cutting elements made of solid steel. Marbach has them all in its portfolio.

For cutting contours, outlines and holes, cutting rules made of steel rule are precisely bent and soldered. For perfectly closed shapes during die-cutting.

Cutting plates are mainly used for thin materials. They are more solid than steel rule. And therefore also more stable. A cost-effective solution for fine contours.

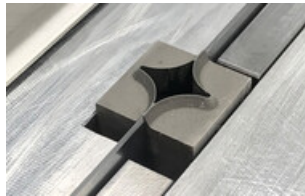
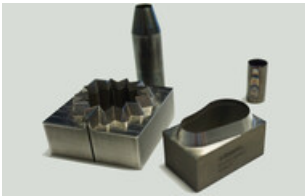
Cutting elements made of solid steel are ideally suited for high demands on stability. They are extremely solid. And durable.

All techniques can also be combined individually. Simply the right solution for every requirement.

perfect cutting results

contour-accurate adaptation

combinable elements



your contact for technical parts & labels

Michael Kiesel

General Sales Manager

phone: +49 7131 918-210

Email: michael.kiesel@marbach.com